

INSIGHT TO ACTION PROJECT:

STRENGTHENING DISEASE SURVEILLANCE AT TWO TRIPLE BORDERS IN SOUTH AMERICA (BRAZIL-COLOMBIA-PERU & BRAZIL-PARAGUAY-ARGENTINA)

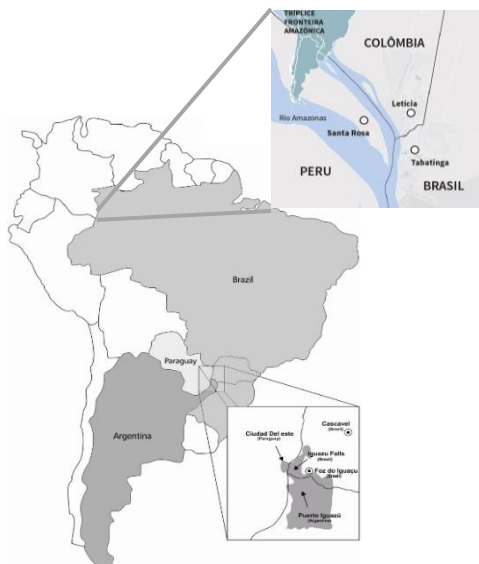
THE INTEGRATED NEXT-GENERATION SURVEILLANCE IN GLOBAL HEALTH: TRANSLATION TO ACTION (INSIGHT) PROJECT IS A FIVE-YEAR COOPERATIVE AGREEMENT BETWEEN THE US CENTERS FOR DISEASE CONTROL AND PREVENTION (CDC) AND THE UNIVERSITY OF WASHINGTON (UW) INTERNATIONAL TRAINING AND EDUCATION CENTER FOR HEALTH (I-TECH) THAT STRENGTHENS GLOBAL HEALTH SECURITY AND PUBLIC HEALTH USING A ONE HEALTH APPROACH AND ENGAGES LOCAL INSTITUTIONS AND EXPERTS IN COUNTRIES WHERE IT WILL BE WORKING IN A SHARED PARTNERSHIP MODEL.

ABOUT I-TECH

I-TECH is a center in the UW Department of Global Health that strengthens long-term capacity in health systems; human resources for health; and targeted, data-driven interventions and research that are responsive to local needs.

TRIPLE BORDER REGION PROGRAM GOAL

To strengthen data, technology, policy, administrative action and increase capacity of workforce to support the integrated ability detect, monitor, investigate, and effectively respond to public health threats in the triple border regions.



Target Triple Borders Regions for the Program

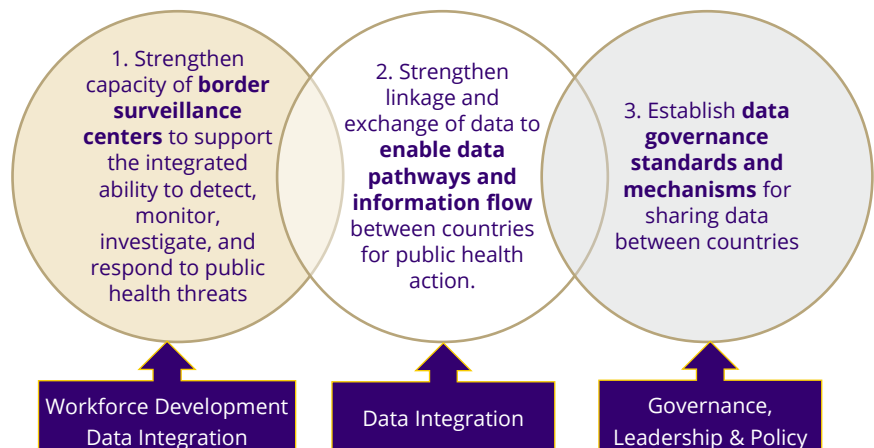
TRIPLE BORDER DISEASE SURVEILLANCE STRENGTHENING PROGRAM

Proposed Timeline: May 2023 – September 2024

Population movement, limited public health infrastructure, different country reporting systems, and poor environmental conditions increase incidence of certain infectious diseases across borders. Communities living in border areas are at risk for higher incidence and worse outcomes of COVID-19 and other infectious diseases.

To improve the detection, monitoring, investigation, and response to public health threats in the triple border regions, I-TECH, as part of the INSIGHT project, will implement the Triple Border Disease Surveillance Strengthening Program in two triple border regions in South America. To accomplish the program's goal, I-TECH will work collaboratively with partners in Argentina, Brazil, Colombia, Paraguay, and Peru to develop and implement targeted program activities focused on long-term sustainability and country ownership.

PROGRAM OBJECTIVES



GLOBAL PUBLIC HEALTH DATA INNOVATION (GPHDI) PROGRAM

INSIGHT is a project under the GPHDI program, which is coordinated by the US CDC Center for Global Health. GPHDI aims to “provide government decision makers with more timely, accurate, and comprehensive public health data to better prevent, detect, and respond to public health threats” by addressing key barriers to effective data use including:

- > Limitations on data access, use, and quality
- > Non-standardized data
- > Workforce limitations
- > Gaps in data systems governance and policy

CONTACTS:

Principal Investigator
Peter Rabinowitz (peter7@uw.edu)

INSIGHT Director
Jennifer Gilvydis (jmas@uw.edu)

South America Regional Director
Fernanda Freistadt (nanda@uw.edu)