

Better Data Support Better Training Programs



The Tanzania National AIDS Control Programme is currently working with I-TECH to adapt and pilot TrainSMART as the standard tool to capture training activities for HIV/AIDS training partners working in Tanzania.

When multiple districts, provinces, or organizations use the same data collection system, it is easier to plan a national strategy, customize trainings, and coordinate and maximize efforts. The result is more efficient use of resources—ensuring that health care workers are trained on the right topics, trainings are not duplicated, and training programs are tailored to local needs and conditions.

With an easy-to-use, easy-to-teach data collection tool like TrainSMART, training data is updated, organized, and readily available from any computer with an internet connection.

Learn more about TrainSMART at
www.TrainingData.org

TrainSMART is a project of I-TECH
www.go2ITECH.org

Server Hosting

I-TECH offers secure, hosted TrainSMART web accounts for a small annual fee, or you may download the free software and install it locally.

In order to host TrainSMART locally, your server must meet these requirements:

- PHP 5 (5.2 or higher preferred)
- Apache 2.0.54+
- MySQL 4.1.11 or higher (5 preferred)
- SVN Client 1.4.4+
- SVN Client Tools
- '--enable-pdo'
- '--with-pdo-mysql=/usr'
- '--with-pdo-pgsql=/usr' '--enable-soap'

Testimonials:

"Using TrainSMART to run my quarterly reports has saved me hours, if not days."

"I can now share real-time data with our funders located on another continent."

"I have more information than I thought I could obtain in such a short time."

"Now we can do all of our data entry ourselves in the training department, and I know this is going to help us improve and advance our training program."

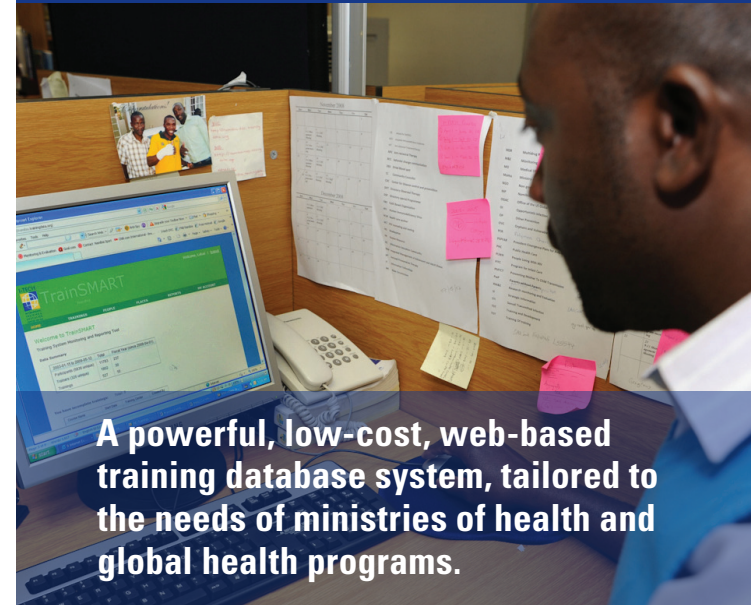
"Before, I was calling each region and asking them for data—now I just get the information right away."

For more information contact:

Robert McLaughlin robmcl@uw.edu
Kate Waldman waldmank@uw.edu

TrainSMART

TRAINING SYSTEM MONITORING AND REPORTING TOOL



A powerful, low-cost, web-based training database system, tailored to the needs of ministries of health and global health programs.

TrainSMART is an easily customizable web-based database software package that helps organizations monitor and report on training activities.

The database can record more than 20 attributes of trainings and more than 20 participant (student) attributes, as well as data about facilities, trainers, and program indicators. It offers user-designed reports and real time views of training data.

TrainSMART is built on the open source LAMP (Linux, Apache, MySQL, PHP) platform, and can be expanded to meet the demands of complex national or international data sets.



I-TECH
International
Training & Education
Center for Health

TrainSMART Use Worldwide



TrainSMART is in use by ministries of health, non-governmental organizations, and I-TECH in more than twenty countries around the world, including:

- | | | |
|---------------|------------|--------------|
| Azerbaijan | Guatemala | Nepal |
| Bangladesh | Guyana | South Africa |
| Barbados | Haiti | Tanzania |
| Botswana | India | Togo |
| Burkina Faso | Jamaica | Uganda |
| Cote d'Ivoire | Kenya | Zambia |
| Ethiopia | Mozambique | |
| Ghana | Namibia | |

To learn more about TrainSMART visit www.TrainingData.org

Reduce Duplicative Trainings

"With TrainSMART, participants who were registered but had already completed a training were identified and new participants were given the opportunity to attend the training instead."

Easy to Use, Easy to Teach

"At four of the organizations, the individuals who were trained by I-TECH have gone on to successfully train others in their organizations to use TrainSMART."

Landing Page: Quick access to a summary of your data

The landing page features a navigation menu with links for HOME, TRAININGS, PEOPLE, PLACES, REPORTS, EVALUATIONS, and MY ACCOUNT. Below the menu is a 'Welcome to TrainSMART' section with a 'Data Summary' table:

2011-06-01 to 2010-05-01	Total	Fiscal Year (since 2010-04-01)
Participants (35 unique)	52	1
Trainers (14 unique)	16	1
Trainings	19	1

Below the table are sections for 'Future Trainings' and 'Incomplete Trainings that already occurred', each with a table listing course names, start dates, training centers, and creators.

Training Page: Multiple attributes of each training are captured

The 'View/Edit Training' form includes fields for: Training category (Malawi), Training name (EMR training), Training start date (Day 01 / Month 03 / Year 2010), Training end date (Day 05 / Month 03 / Year 2010), Training length (5 hours), Training organizer (Tijan National Training Center), Training location (Alemani - Safari Hotel), Training Level (Level 1), PEPFAR (PMTCT), Training Method (select), Training topic (select), Training of Trainers (checkbox), Refresher course (checkbox), National curriculum (select), and a Comments field.

Customizable: Hand-pick the fields and modules you use

The settings page is organized into sections: Country Setup (Provinces/States, Districts), Training (Training Settings, Assign Titles, Training Title, Training Organizer, Training Level, Training Topic, Display Category, Funding, Recommended Topic, Nat. Curriculum, Training Method), People (People Settings, Qualifications, Responsibility, Trainer Types, Trainer Skills, Languages, Affiliations, Titles, Suffix, Active Trainer), and Facilities (Facilities Settings). The Appearance section shows the Application Name as 'TrainSMART' and a logo upload area. The Settings table allows configuration of Country (Republic of Tjisan), Region A (Province), Region B (District), and City/Town (City). The Modules section shows 'Evaluation' and 'Approvals' both set to 'Enable'.